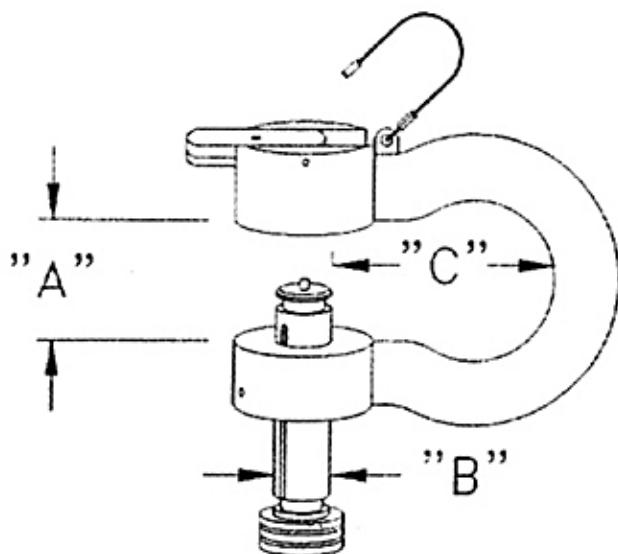


- * Open in 6 seconds
- * Close in 3 seconds
- * Shackle all in one piece
- * Bolt can not be removed
- * Nut can not be removed
- * No tools required to open or close
- * Controlled metals
- * Matched shackles
- * All tolerances within $\pm .010$ "



Type 4330 Alloy Steel Anchor Shackles

zinc coating in accordance with ASTM-B633, Type II, class Fe/Zn, Yellow. 4330 Alloy, investment cast provides a yield strength of 200,000PSI.

Type 15-5PH Stainless Steel Anchor Shackles

15-5PH Stainless Steel composition provides a yield strength of 160,000psi.

Type 316 Stainless Steel Anchor Shackles

offer excellent corrosion resistance while providing a non-magnetic composition for operations with magnetic-sensitive materials. 316 Stainless Steel composition provides a yield strength of 60,000psi.

TYPE 4330 ALLOY STEEL ANCHOR SHACKLES

Stock Size	A	B	C	Safe Work Load Pounds	Weight Each
1/2"	13/16"	5/8"	2"	4,000	0.87
5/8"	1-1/16"	3/4"	2-5/16"	6,500	2.49
3/4"	1-1/4"	7/8"	3"	9,500	2.68
1"	1-11/16"	1-1/8"	3-3/4"	17,000	5.55

TYPE 15-5PH STAINLESS STEEL ANCHOR SHACKLES

Stock Size	A	B	C	Safe Work Load Pounds	Weight Each
1/2"	13/16"	5/8"	2"	4,000	0.87
5/8"	1-1/16"	3/4"	2-5/16"	6,500	2.49
3/4"	1-1/4"	7/8"	3"	9,500	2.68
1"	1-11/16"	1-1/8"	3-3/4"	17,000	5.55

TYPE 316 STAINLESS STEEL ANCHOR SHACKLES

Stock Size	A	B	C	Safe Work Load Pounds	Weight Each
1/2"	13/16"	5/8"	2"	2,000	0.87
5/8"	1-1/16"	3/4"	2-5/16"	3,000	2.49
3/4"	1-1/4"	7/8"	3"	4,500	2.68
1"	1-11/16"	1-1/8"	3-3/4"	8,000	5.55

CLIMBER'S BUDDY-SUR LOC, INC.

FREMONT, INDIANA 46737

TOLERANCES

UNLESS OTHERWISE SPECIFIED

THIS DRAWING IS THE PROPERTY OF CLIMBER'S BUDDY-SUR LOC, INC. IT IS NOT TO BE REPRODUCED, COPIED OR TRACED IN WHOLE OR IN PART WITHOUT OUR WRITTEN CONSENT.

DECIMAL

± .005

STANDARD
REFERENCE

SCALE

NTS

DATE: 11/97
DRAWN BY: MNEFF

FRACTIONAL

± .005

TITLE
SUR-LOC ONE-PIECE SHACKLE

ANGULAR

± .005

DATE

6/06/94

DRAWING NUMBER

CB-0073