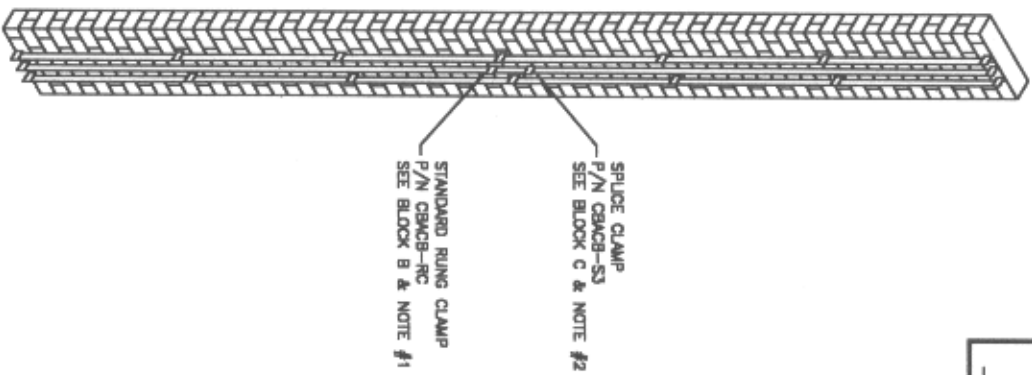
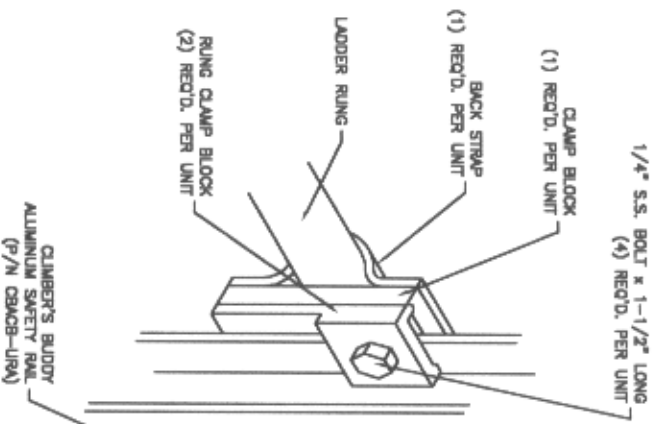


A



ASSEMBLY ELEVATION  
SCALE = 1:64

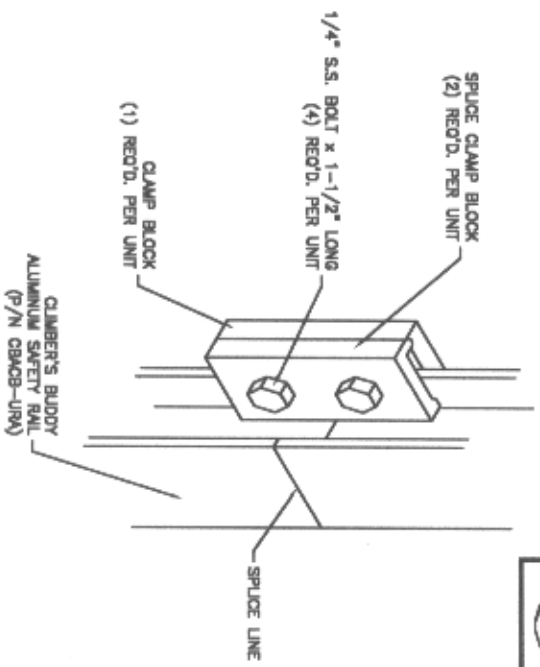
B



RUNG CLAMP ASSEMBLY  
(P/N CBACB-RC)  
SCALE = 1:2

P/N	DESCRIPTION
CBACB-A1M	SID. ANGLE LEG MOUNT
CBACB-A1M.L	LARGE ANGLE LEG MOUNT
CBACB-R1M	STD. ROUND LEG MOUNT
CBACB-R1M.L	LARGE ROUND LEG MOUNT
ACB-S3	REMOVABLE/PERMANENT TOP STOP (SPECIFY)
ACB-3R	REMOVABLE 3rd RAIL SECTION
ACB-S2	SAFETY SLEEVE (2 RECOMMENDED/INSTALLATION)
BLT	STANDARD SAFETY BELT (2 RECOMMENDED)
9-3D-M	SAFETY HARNESS
L706	6ft LANYARD

C



SPLICE CLAMP ASSEMBLY  
(P/N CBACB-S3)  
SCALE = 1:2

- NOTES:
1. FOUR RUNG CLAMPS REQUIRED PER 20ft OF RAIL AND ARE STOCKED FOR 3/4" & 1" DIAMETER STANDARD RUNGS.
  2. SPLICE CLAMPS ARE REQUIRED FOR ALL RAIL-TO-RAIL CONNECTIONS TO PROVIDE CONTINUITY FOR SAFETY DEVICE.
  3. ALL FASTENERS ARE OF STAINLESS STEEL MATERIAL.

**CLIMBER'S BUDDY/SUR-LOC, INC.**  
P.O. BOX 750 FREDONT, IN 46757 - (317) 488-4068

THIS DRAWING IS THE PROPERTY OF CLIMBER'S BUDDY/SUR-LOC, INC. IT IS NOT TO BE REPRODUCED, COPIED, OR TIAKED IN WHOLE OR IN PART WITHOUT OUR WRITTEN CONSENT.

TYPICAL INSTALLATION	SCALE	DATE	APP'D
	NOTED	D. RETYES	D. SWAGER

TITLE: ALUMINUM SAFETY RAIL

DATE: 02/28/00

DRAWING NUMBER: S003-00-1AR